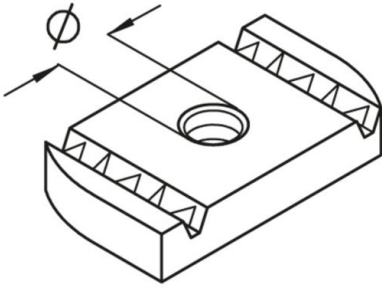


## AM22

channel nut, A 41, KHA 41, KHAL 41



**galvanized, according to DIN EN ISO 19598 / DIN EN ISO 2081**

Product	Ø	t	G
AM22 M6	6 mm	6,00 mm	2,6 kg/100
AM22 M8	8 mm	6,00 mm	2,4 kg/100
AM22 M10	10 mm	8,00 mm	3,3 kg/100
AM22 M12	12 mm	9,50 mm	3,9 kg/100

**Hot-dip galvanized, according to BS 729 (DIN EN ISO 1461)**

Product	Ø	t	G
AM22 M6F	6 mm	6,00 mm	2,8 kg/100
AM22 M8F	8 mm	6,00 mm	2,6 kg/100
AM22 M10F	10 mm	8,00 mm	3,5 kg/100
AM22 M12F	12 mm	9,00 mm	3,9 kg/100

**Stainless steel, according to ASTM 31 Ti / AISI 316 L, BS 320S17 / BS 316S11**

Product	Ø	t	G
AM22 M6E4	6 mm	6,00 mm	2,6 kg/100
AM22 M8E4	8 mm	6,00 mm	2,4 kg/100
AM22 M10E4	10 mm	8,00 mm	3,5 kg/100





Product	Ø	t	G
AM22 M12E4	12 mm	9,50 mm	4,0 kg/100

## Hot-dip galvanized, according to BS 729 (DIN EN ISO 1461)

Product	Ø	t	G
AM22 M6-HDG	6 mm	6,00 mm	2,70 kg/100
AM22 M8-HDG	8 mm	6,00 mm	2,50 kg/100
AM22 M10-HDG	10 mm	8,00 mm	3,5 kg/100
AM22 M12-HDG	12 mm	9,50 mm	3,9 kg/100

## Stainless steel, according to ASTM 31 Ti / AISI 316 L, BS 320S17 / BS 316S11

Product	Ø	t	G
AM22 M6-316	6 mm	6,00 mm	2,6 kg/100
AM22 M8-316	8 mm	6,00 mm	2,4 kg/100
AM22 M10-316	10 mm	8,00 mm	3,5 kg/100
AM22 M12-316	12 mm	9,50 mm	4,0 kg/100

Ø: diameter

t: material thickness

G: weight

## DETAILS / APPLICATIONS



