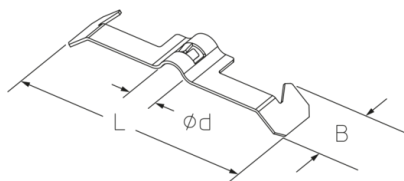


GK-A

mesh cable tray clamp



The GK-A mesh cable tray clamp is easy to install on e.g. KHA profiles or strut mounting rails. It therefore saves time when fastening a lattice track. Place GK-A at the desired position above the mesh cable tray, compress the clamp and slide it to the desired place. Installation is done without any tools or additional fastening material.

Use two GK-A per strut mount rail for mesh cable trays up to 300 mm; three clamps per strut mount rail for mesh cable trays up to 457 mm and one clamp per strut mount for each additional 150 mm mesh cable tray width.

No load specification, for positioning only.

The coating is called Caddy Armour, a mixture of zinc flake and paint coating, which is permitted for indoor use.

Product	L	B	D
GK-A	74 mm	16 mm	4-8 mm

L: length
B: width
D: diameter

DETAILS / APPLICATIONS

