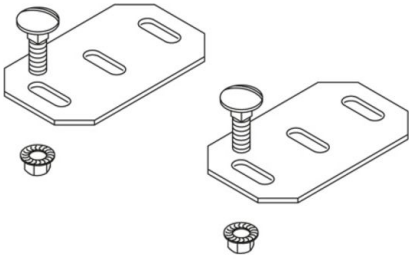


KLUS

clamp fastening set

The KLUS consists of two sheets including screw accessories for the console.

For mounting in conjunction with a cable tray, a KLR must be used. For mounting in conjunction with a cable ladder, a KLU must be used.



Continuously hot galvanized (Sendzimir process) (DIN EN 10346)

Product	G
KLUS	9,3 kg/100
incl.:	
2x FRSV 6X16	round-head screw with short square, DIN 603
2x SEMS 6	hexagon-nut with flange, DIN EN 1661

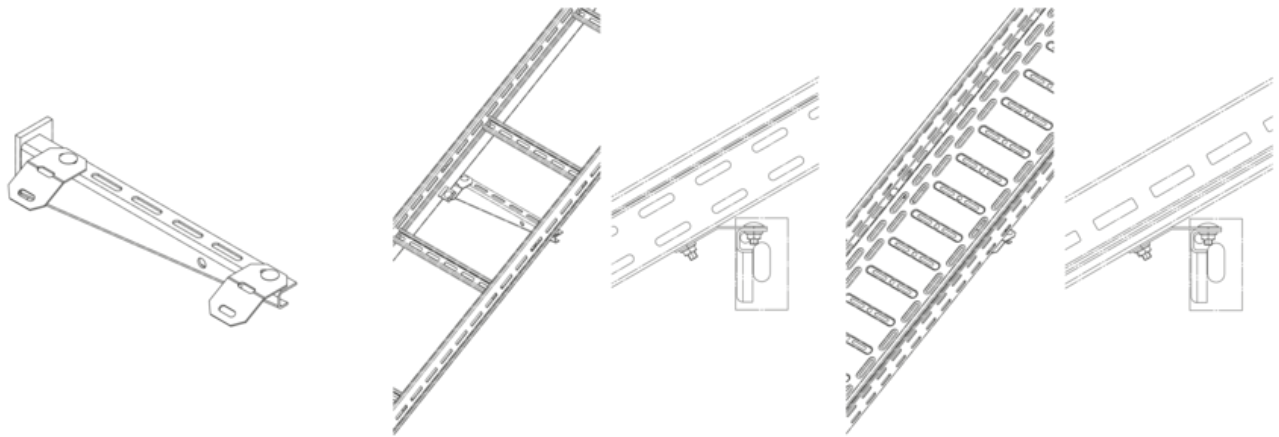
Stainless steel, according to ASTM 304 / BS 304 S 3

Product	G
KLUS E	8,1 kg/100
incl.:	
2x FRSV 6X16E	round-head screw with short square, DIN 603
2x SEMS 6E	hexagon-nut with flange, DIN EN 1661

G: weight

DETAILS / APPLICATIONS





OPTIONAL ACCESSORIES

FRSV, SEMS, KLR, KLU

