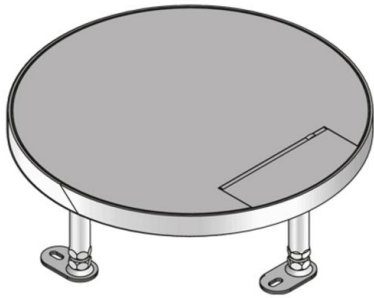


## UEKD RP E

stainless steel hinged cover unit, triple, round, plane



Round cartridge made of flat stainless steel, surface blasted, with hem. As levelling cartridge installation frame with cable outlet cartridge, floor-level cable outlet, self-closing opening lever and rubber seal for the installation into floor boxes, assembly covers and raised or hollow floor openings. To accommodate up to 3 mounting boxes equipped with up to 9 suspension bracket installation devices or 12 installation devices of 45x45 mm. Suitable for rooms with dry and damp-cleaned floor covers. Designed for office traffic loads.

Please mind the technical information in chapter planning.



material	Cartridge with cable outlet and frame: stainless steel
type of assembly	To be mounted in floor box UBDHB respectively hollow floors.
application area	dry floor cleaning
protection class	in use IP 20 / not in use IP 30
norm	according to DIN EN 50085
permits	according to VDE / TÜV
loading	including inspection stamp Ø13 / 130 mm: 4 / 10 kN

### Stainless steel, according to ASTM 304 / BS 304 S 3

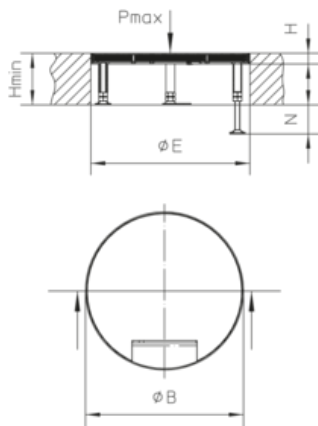
Product	H	H <sub>min</sub>	N	B	E	P <sub>max</sub>	IP <sub>n</sub>	IP <sub>g</sub>	G
UEKD 15-RP E	21 mm	100 mm	55 mm	305 mm	307 mm	4 kN	IP 30	IP 20	3,25 kg
incl.:									
1x UGD-R 10-2									rubber seal, round

**H:** height  
**H<sub>min</sub>:** Minimum installation height  
**N:** levelling range  
**B:** width  
**E:** fitting dimension  
**P<sub>max</sub>:** Maximum load  
**IP<sub>n</sub>:** IP protection level in unused condition



**IP<sub>g</sub>**: IP protection level in used condition  
**G**: weight

## DETAILS / APPLICATIONS



## OPTIONAL ACCESSORIES

UGEAR, UBDSLFL, UGM SLF



dry-cleaned

