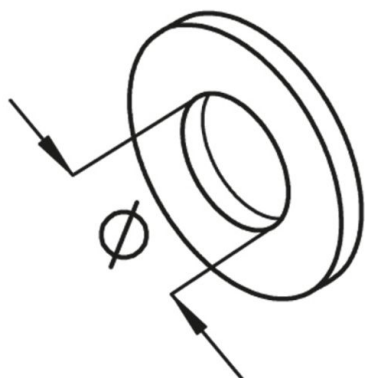


**UVS**  
captive washer



**Polyethylen**

Product	D	Ø	t	G
UVS M6	12,5 mm	6 mm	1,30 mm	< 0.01 kg/100
UVS M8	16,2 mm	8 mm	1,65 mm	< 0.01 kg/100
UVS M10-PE	30 mm	10,5 mm	2,10 mm	< 0.01 kg/100
UVS M10X24-PE	24 mm	10 mm	2,10 mm	0,06 kg/100

**D:** diameter  
**Ø:** diameter  
**t:** material thickness  
**G:** weight

DETAILS / APPLICATIONS



