

## KHU 80

consolehouder, zwaar, 80x60 mm

Console houder, U-profiel 80x60x5 mm, driezijdig geperforeerd.

Hogere belastingen kunnen worden bereikt door het ondersteuningsstuk te gebruiken.

**Thermisch verzinkt volgens BS 729 (DIN EN ISO 1461)**

Product	H	B	L	G
KHU 80-02F	80 mm	60 mm	200 mm	1,33 kg
KHU 80-03F	80 mm	60 mm	300 mm	2,00 kg
KHU 80-04F	80 mm	60 mm	400 mm	2,66 kg
KHU 80-05F	80 mm	60 mm	500 mm	3,33 kg
KHU 80-06F	80 mm	60 mm	600 mm	3,99 kg
KHU 80-07F	80 mm	60 mm	700 mm	4,66 kg
KHU 80-08F	80 mm	60 mm	800 mm	5,32 kg
KHU 80-09F	80 mm	60 mm	900 mm	5,99 kg
KHU 80-10F	80 mm	60 mm	1000 mm	6,65 kg
KHU 80-11F	80 mm	60 mm	1100 mm	7,32 kg
KHU 80-12F	80 mm	60 mm	1200 mm	7,98 kg
KHU 80-13F	80 mm	60 mm	1300 mm	8,65 kg
KHU 80-14F	80 mm	60 mm	1400 mm	9,32 kg
KHU 80-15F	80 mm	60 mm	1500 mm	9,98 kg
KHU 80-20F	80 mm	60 mm	2000 mm	13,31 kg
KHU 80-30F	80 mm	60 mm	3000 mm	19,96 kg
KHU 80-60F	80 mm	60 mm	6000 mm	39,92 kg

**Thermisch verzinkt volgens BS 729 (DIN EN ISO 1461)**



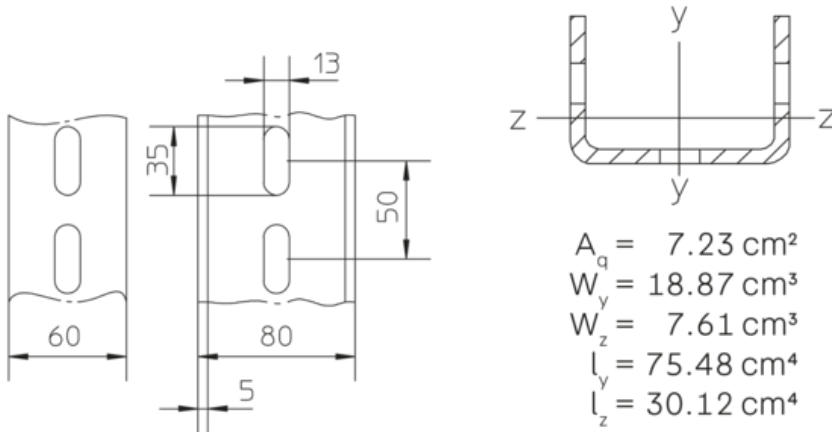


Product	H	B	L	G
KHU 80-02-HDG	80 mm	60 mm	200 mm	1,33 kg
KHU 80-03-HDG	80 mm	60 mm	300 mm	2,00 kg
KHU 80-04-HDG	80 mm	60 mm	400 mm	2,66 kg
KHU 80-05-HDG	80 mm	60 mm	500 mm	3,33 kg
KHU 80-06-HDG	80 mm	60 mm	600 mm	3,99 kg
KHU 80-07-HDG	80 mm	60 mm	700 mm	4,66 kg
KHU 80-08-HDG	80 mm	60 mm	800 mm	5,32 kg
KHU 80-09-HDG	80 mm	60 mm	900 mm	5,99 kg
KHU 80-10-HDG	80 mm	60 mm	1000 mm	6,65 kg
KHU 80-11-HDG	80 mm	60 mm	1100 mm	7,32 kg
KHU 80-12-HDG	80 mm	60 mm	1200 mm	7,98 kg
KHU 80-13-HDG	80 mm	60 mm	1300 mm	8,65 kg
KHU 80-14-HDG	80 mm	60 mm	1400 mm	9,32 kg
KHU 80-15-HDG	80 mm	60 mm	1500 mm	9,98 kg
KHU 80-20-HDG	80 mm	60 mm	2000 mm	13,31 kg
KHU 80-30-HDG	80 mm	60 mm	3000 mm	19,96 kg
KHU 80-60-HDG	80 mm	60 mm	6000 mm	39,92 kg

**H:** hoogte  
**B:** breedte  
**L:** lengte  
**G:** gewicht

## DETAILS / TOEPASSINGEN





## OPTIONELE TOEBEHOREN

BGU 80, KHUV 80, KHUSS 80, KW, KLS, SU 80

