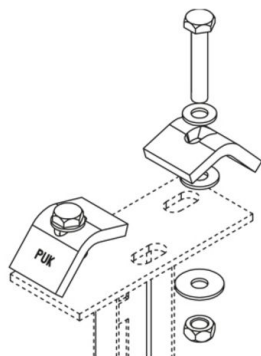


SKLC M

klem set



Thermisch verzinkt volgens BS 729 (DIN EN ISO 1461)

Product	k	P_{max}	M	G
SKLC M-HDG	5 - 25 mm	10 kN	35 Nm	0,45 kg/Satz
inclusief:				
2x SES 10X55-HDG		zeskantbout DIN 933		
2x SEM 10-HDG		zeskantmoer DIN 934		
2x US 10X30-HDG		carrosseriering DIN EN ISO 7093		
2x UVS M10X24-PE		sluitring		

Roestvrij staal volgens ASTM 31 Ti / AISI 316 L, BS 320S17 / BS 316S11

Product	k	P_{max}	M	G
SKLC M-316	5 - 25 mm	10 kN	35 Nm	0,45 kg/Satz
inclusief:				
2x SES 10X55-316		zeskantbout DIN 933		
2x US 10X30-316		carrosseriering DIN EN ISO 7093		
2x SEM 10-316		zeskantmoer DIN 934		
2x UVS M10X24-PE		sluitring		

k: klembereik

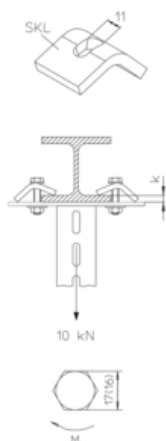
P_{max} : max. belasting

M: tordiemoment

G: gewicht



DETAILS / TOEPASSINGEN



OPTIONELE TOEBEHOREN

KDU 60, KHA 2, HS22

